

Tenterden Recreation Ground

***Focus Group Meeting
Tuesday 17th April***

Meeting Notes



**TENTERDEN
TOWN COUNCIL**



Project: Tenterden Recreation Ground
Purpose: Focus Group Meeting
Date: Tuesday 17th November 2017
Time: 7:00 PM
Venue: Tenterden Town Hall, 24 High Street, Tenterden, Kent TN30 6AN

Present: **Ground Control**
Rahsan Arber
Chris Chippendale

Tenterden Town Council
Phil Burgess
Cllr. Alan Sugden
Cllr. Ken Mulholland
Cllr. Mike carter

Focus Group Members

Ian Brooks	Jo Vos
Susie Hall	Sheila Jones
Ollie Wakefield	Archie Anderson
Richard Parsons	Alan Bates
Ray Walker	Ann Walker
Neal Stanton	Harriet Pullen
Dr John Parker	

Apologies:

Suzanne Goodsell	Jerry Newson
Jack Burrill	Jon Slegg
Laura Weston	Dr Tony Wynter
Nick Leggatt	Ruth Clarke
Tiffany (Youth café)	James (Youth café)
Nick Clapp	Sue Denton
Lisa (netball representative)	Lorna Jones
Mollie Miller	Tom Vincent
Sam Bolidai	Jennie Goodall
Tyler (Youth café)	Andy Barwise
Alexandra White	

Circulation: All present (where we hold emails addresses) and wider Focus Group members

1.0 Introduction:

Please can we take this opportunity to thank each and every member of the focus group who attended our workshop on the evening of the 17th April at the Town Hall.

The aim of this presentation was to outline how we have taken the Focus Group, Planning and Lawn Tennis Associate feedbacks forward, addressed the specific concerns raised and present our Outline Master Plan.

This was followed by a group activity/workshop to define the character, theme and feel of the Children's Play /Youth areas and Plaza.

We are pleased to enclose a copy of the 3rd Focus Group Power Point Presentation which facilitated the meeting for your records (**Annex A**). Alongside this presentation we are pleased to share the following notes as a record of the discussion points raised during the active workshop for each table.

2.0 Group Activity (Collective Workshop)

Description of Activity:

A Split group exercise whereby the focus group were split into 3 groups (tables) with a mix of stakeholder representatives on each table.

Each table was tasked with collectively working together to prepare concept boards and schematic zoning plan to define the character, theme and feel of the children play and youth area as well as the plaza.

Each table was provided with photos/ideas for different type of play/youth areas and plaza facilities to choose from and fed back to the focus group on their thoughts.

Feedback Response:

We have included a photographic record of the displayed boards along with the main feedback points to come from each of the tables.

Table 1 (Feedback & recommendations)

- Open visibility from plaza into the children area
- Low zip wire between the trees
- Mounds around the play areas towards the Sandy Lane incorporating slides and boulders.
- Recessed trampoline towards the kiosk
- Table tennis within plaza
- No adult gym equipment
- Traditional wooden kiosk and benches
- Natural, country theme but still modern feel plaza building
- Focal point play equipment with a theme within the children's play area
- Nest swing near the skate park
- Younger children area nearer the plaza
- Main structures nearer the back boundary not to screen the park
- Mix of equipment /use to get people /different age groups together
- Current park does not attract children of 9 years old and over
- Timber covered area nearer the play area recommended
- Prefer artificial bark mulch as a surface finished for the play areas



Table 2 (Feedback & recommendations)

- Bigger Skate Park is desired as it needs to incorporate scooter and BMX. The original size was minimum and designed to fit in to the available area between the existing pavilion building and Recreation Ground Road
- Consider drainage for the skate park
- The MUGA to be open to everyone
- Like the idea of table tennis between skate park and plaza
- Obstacle course/adventure equipment to encourage movement for youth
- Pebble seating around the skate park
- Zip wire, recessed trampoline
- Big swings and climbing frame for youth
- Outdoor gym equipment
- Distinct path between skate park and plaza
- Prefer more formal play equipment with hard play surface
- Contemporary look
- Glass and timber plaza/youth hub building
- Younger children play area nearer Sandy Lane and older nearer the skate park
- Focal point play equipment
- In favour of gym equipment
- Seating around the skate park



Table 3 (Feedback & recommendations)

- Locate toddler play area away from the skate park
- Natural country feel
- Use of timber
- Focal point play equipment
- Timber plaza building such as train
- Direct vehicle access to bowls green



4.0 *Next Steps*

Following our focus meeting we will develop the Master Plan further taking into account your feedback as noted above and continue to liaise with individual stake holders in preparation for our final focus group meeting which we will provide you with a date shortly.

We will of course feedback any updates collectively to the group if we feel matters need to be shared prior to our next meeting.

Please see the “Next Step” section of the enclosed presentation (Annex A) for the outline timescale diagram.

Annex A:
Focus Group Meeting Nr 3 Power Point Presentation

Tenterden Recreation Ground
Focus Group Meeting
17th April 2018



TENTERDEN
TOWN COUNCIL



Agenda

1. What has happened since last meeting?

2. Outline Landscape Master Plan

3. How we responded to your feedback?

4. Focus Group Activity

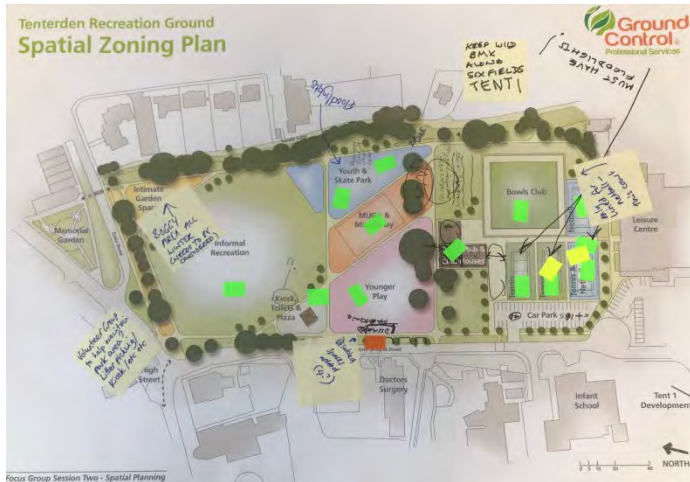
5. Next steps

What has happened since our last meeting?

- *Focus Group Feedback*
- *Pre-application Planning Advise*
- *Lawn Tennis Association (LTA) feedback*



Focus Group Feedback



Liked;

- ***Relocation of bowls club and tennis courts to existing football pitch location.***
- ***Improved footpath network, retained open frontage and gardenesque area.***

Focus Group Feedback

Desired;

- *Swap skate park with the younger children's play area to put skate park adjacent to Recreation Ground Road*
- *Separate youth hub from Club House and possibly locate in plaza kiosk*
- *Amend siting of bowls club building against bowls green.*
- *Retain existing carpark as current (2 tables) or if not introduce disabled parking provision close to doctors surgery (2 tables)*
- *Retain existing play mound*

Pre-Application Planning Advice

“Ashford Borough Council supportive of the proposals. “

Planning permission required for ;

- ***Car Park and access road. Consultation with Highways for access road.***
- ***Disable parking bays.***
- ***Tennis courts and lighting***
- ***Skate Park (Subject to size)***
- ***Town beacon (over 4m)***
- ***Structures exceeding 4m in height or 200 cubic meters***
- ***Re-location of football pitch***



Pre-Application Planning Advice

- ***Siting of children's play area and Skate Park relative to each other to be re considered.***
- ***Kiosk to be designed as a pavilion building with 360 degree Frontages***
- ***Existing play equipment can be re-used if in compliance with standards***
- ***Lighting to main footpaths recommended.***
- ***Sports court lighting to be time restricted.***
- ***Boundaries should be avoided for children play areas for over 8 years olds.***
- ***Activities to attract teenage girls to be introduced.***
- ***Happy with the car park location***



Pre-Application Planning Advice

Kent County Council Highways;

- ***Relocate entrance of the new car park away from school entrance***
- ***Reduce to 2nr disable parking bays opposite the surgery due to new zebra crossing restrictions.***
- ***Submit Stage 1 Safety Audit***
- ***Annotate Tent 1 traffic calming and zebra crossing information.***



LTA - Funding Application Requirements and Technical Advice

Requirements;

- ***Business Plan***

 - Operation details***

 - Court layout***

 - Lighting proposal***

 - Netball timetable***

- ***3 Main Criteria need to be met***

 - Partnership with other venues working together***

 - Financial sustainability***

 - Online booking and entry system***

LTA will fund up to 50% of each bid; 25% Funding, 25% interest-free loan

LTA - Funding Application Requirements and Technical Advice

Technical;

- ***Mark all 4 courts with tennis lining; 2x tennis & 2x netball/tennis mix***
- ***Include mini tennis line marking***
- ***North-south orientation desired but east-west orientation is acceptable***
- ***Make courts adjacent to each others separated with low partition fence***
- ***Easy access and make it open to everyone. Online booking to courts available to all.***
- ***Separate entrance to tennis courts with key pad operated doors.***
- ***Business plan to include netball usage timetable.***
- ***Club house not necessary for funding but would be covered by fund.***

How have we taken these feedback forward and addressed the following primary aspects?

Skate Park & Children's Play Area Locations

Youth Hub and Club House

Car Park

Outline Landscape Master Plan

Outline Landscape Master Plan





Skate Park and Children's Play Area Location

- ***Swapped children play area and skate park location.***
- ***Set back skate park towards existing trees, introduced buffer landscaping between the plaza and skate park whilst retaining the connection.***
- ***Created an organic layout to blend in with the surrounding new and existing landscape.***
- ***Re- located the MUGA away from younger children's play area***
- ***Introduce youth facilities that also considers teenage girls.***

Club House & Youth Hub

- *Youth hub/café separated from the club house building and relocated to plaza*
- *Plaza building to incorporate youth hub, toilet facilities and kiosk.*
- *Club house to serve mainly Bowls club, incorporating changing and toilet facilities for tennis and netball with separate access.*
- *Club house building adjusted to sit next to bowls green.*
- *Separate building access for the Bowls Club and tennis courts provided.*
- *Vehicle access and parking bays to the bowls club incorporated.*

Car Park

- ***Retained the car park location nearer the leisure centre***
- ***Introduced 2nr Disable parking spaces opposite the doctors surgery in addition to 2nr proposed as part of Tent 1 development***

Why?

- ***Car park divides the site and its relocation offers greater opportunity for the recreation grounds reconfiguration.***
- ***Current car park provides limited spaces; 20nr total including 4nr disable parking bays.***
- ***Proposed car park can provide up to 36nr spaces including 6No disable spaces, of which 2no are opposite & 2nr (tent 1)next to surgery.***

Car Park

Opportunities;

- ***Allocate some current staff parking spaces for the surgery patients within surgery car park and designate staff spaces within the new car park.***
- ***Patients can continue to be dropped off in front of the surgery.***
- ***Continued opportunities to park within the Waitrose car park if required @ 55p /per hr (5Nr Disable parking spaces available)***
- ***Continue with the current payment agreement with Ashford but with more available spaces.***

In addition, the following aspects have also been incorporated in response to feedback;

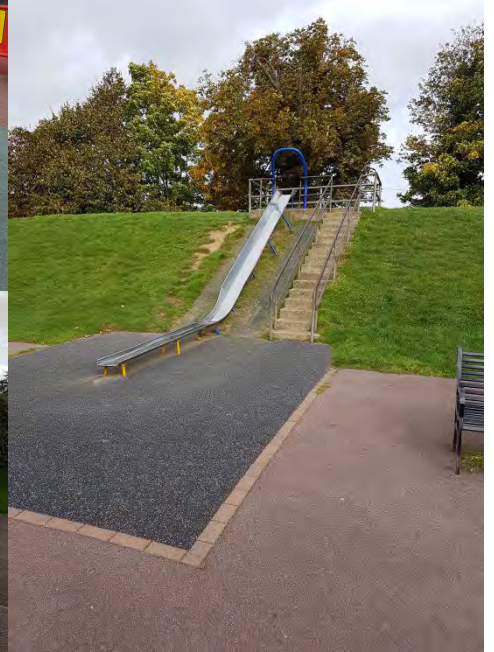
- ***Plaza extended and developed.***
- ***Middle footpath has been removed to provide***
- ***Gardenesque seating area and frontage developed.***
- ***Tennis court layout adjusted to suit with LTA requirements.***
- ***Shelter and benches within and around the tennis courts provided.***
- ***Improved leisure centre connection with extended entrance area linking footpath to recreation ground.***
- ***Introduction of mounds to children's play area***

Group Activity;

Collective workshop to define the character, theme and feel of the Children's Play, Youth Areas and Plaza.



Existing Children's Play Area



Lipton's Consultation Report & Ian Brook's Past Skate & Facility Consultation recommends;

Natural Play opportunities


***Facilities for older young users such as boulders, climbing
walls, zip wire and adventure park features etc.***

Youth hub/cafe within the park

Skate park and MUGA nearer the Youth Hub/Café/ Plaza

Sheltered areas for youth



A grayscale background image of a park. In the foreground is a large, open grassy field. In the middle ground, there is a playground with various structures, including slides and climbing equipment. A few people are visible near the playground. The background is filled with a dense line of trees under a sky with scattered clouds.

***“ Imagine a play space
designed to enhance its
settings ”***

Themes / Narrative



Formal/ Natural /Mix Play & Equipment Type



Type of Surface /Materials



Destinations / Features



Mix of Ages – Youth



Plaza Character

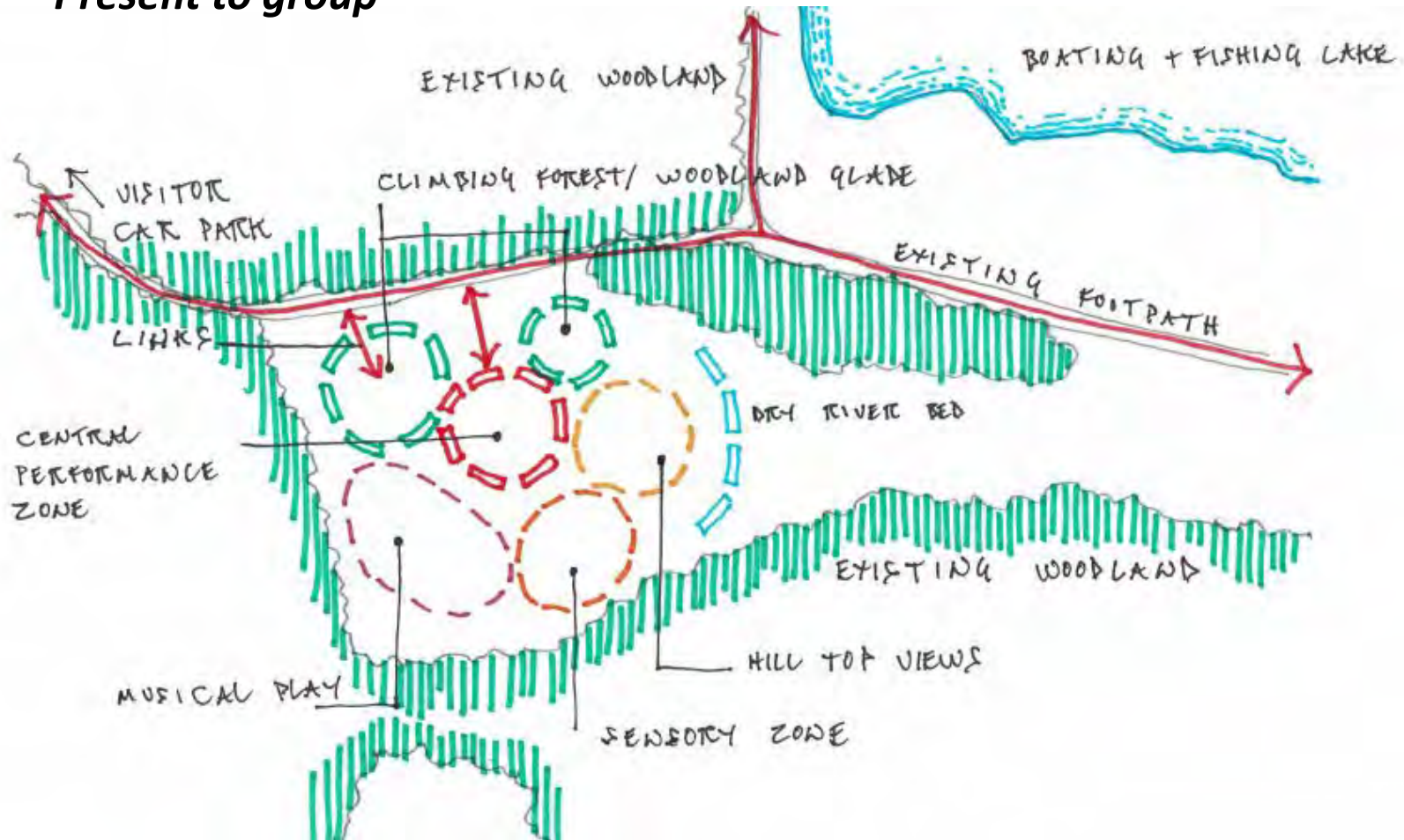


Relationship between Plaza, Youth Facilities and Younger Play

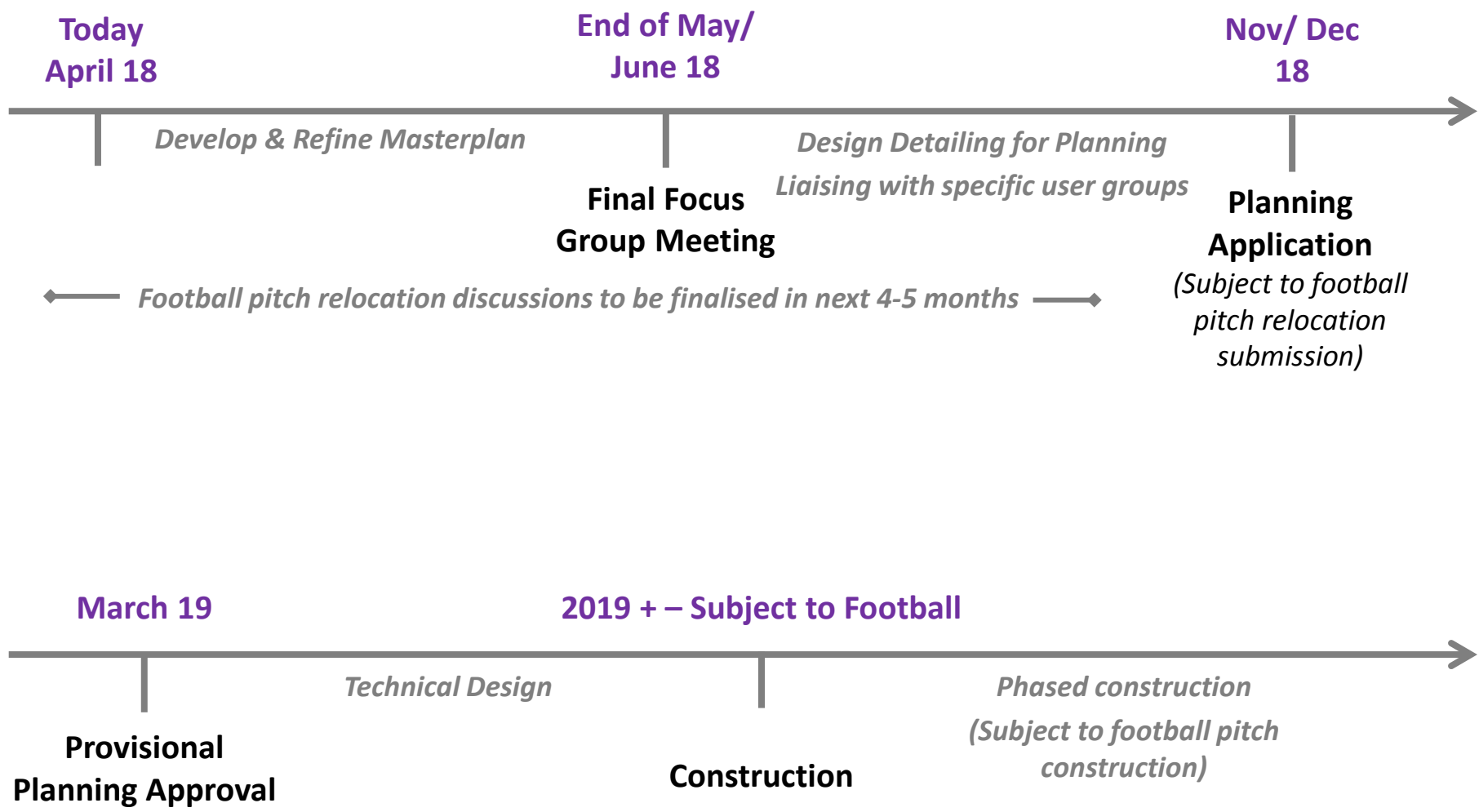


How to express this;

- **Schematic zoning**
- **Spider Diagrams**
- **Mood Board**
- **Present to group**



Next Steps



Thank you

Questions?

